

## PRODUCT ANNOUNCEMENT FROM MILLETEKNIK

Milletechnik makes changes and it affects some products.

### DESCRIPTION

#### What's changing

The PRO1 circuit board is becoming obsolete for production engineering reasons.

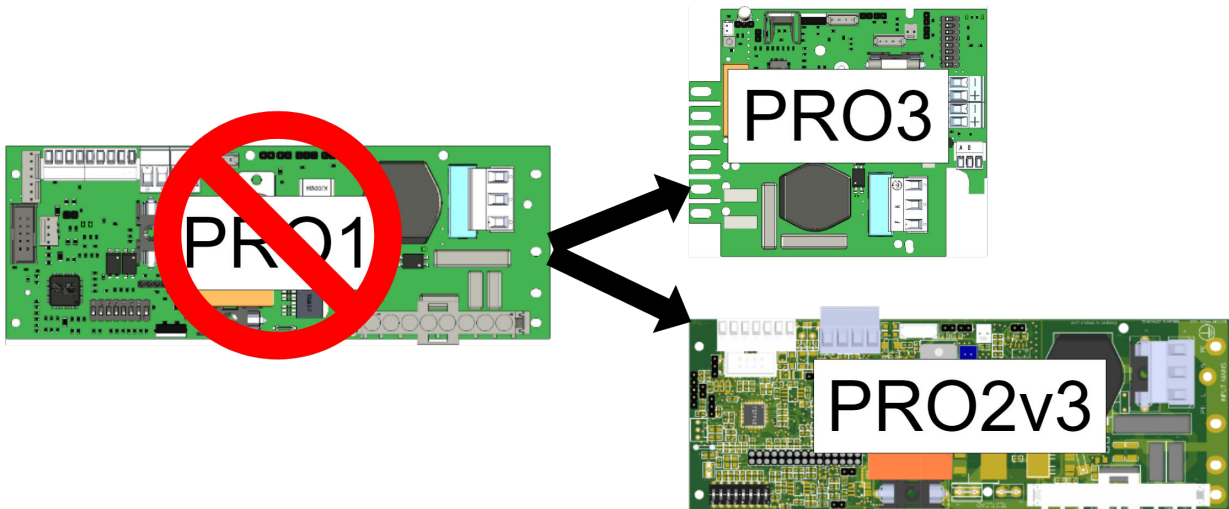
In the last two years, we have phased over from PRO1 to other PCBs (PRO2v3 and PRO3).

Devices affected are SSF certified devices (Nova series) and ditto customised.

Now we are phasing over the last custom-made devices.

The PRO1 card will be available as a spare part.

#### PRO1 EOL



PRO1 is replaced by PRO2v3 and PRO3.

#### PRO1 EOL

Amperage	Card as replaced
5A - 10A	PRO3
15A - 25A	Pro2v3

#### WHY REPLACE WITH TWO DIFFERENT CARDS?

The PRO1 card is replaced with two different cards for technical reasons.

The PRO3 board can handle current strengths up to 10 A and the PRO2v3 handles currents from 15 A.

#### What does not change

NEO with display will continue to have the PRO1 card.

## Choose the right battery box



### IMPORTANT

Battery boxes for PRO1 cards cannot be used with battery boxes for PRO2v2 or PRO3 cards.

Contact us or your sales representative if you have any questions about battery box compatibility.

## Choose the right battery box

Circuit boards in battery backup	Battery box	Item number	E-number	The status
PRO1	Battery box 24V FLX M PRO1	FM040000024BB02 (discontinued)	Expired	Expired <sup>a</sup>
Pro2v3	Battery box 24V FLX M	FM010000024BB01	52 135 73	Active
PRO3				

<sup>a</sup>Expired products are no longer manufactured and cannot be ordered.

## When the change is expected

The change has been implemented with the last customised PRO1 units leaving the factory at the turn of the year.

## Products affected

Devices affected are SSF certified devices (Nova series) and ditto customised.

## CONTACT AND ADDRESS

### Contacts at Milleteknik:

Sales: sales@milleteknik.se, 031-34 00 230.

Ögärdesvägen 8 B

S-433 30 Partille

031-34 00 230